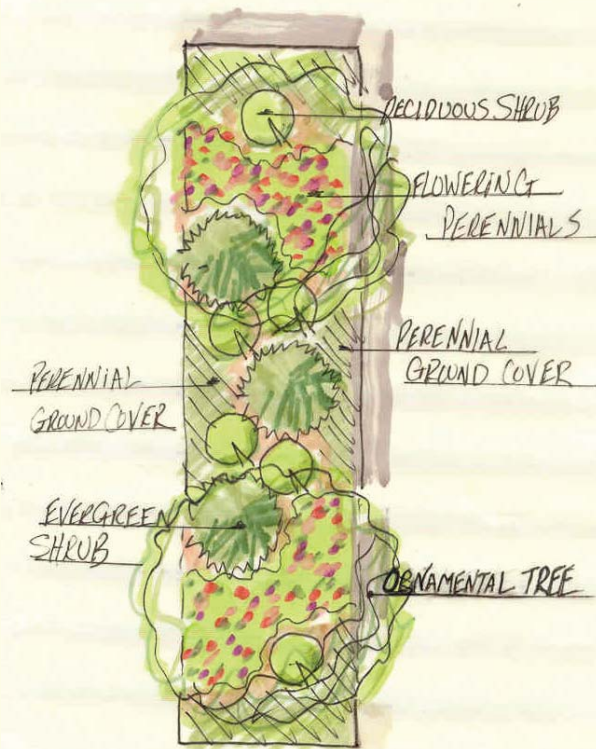
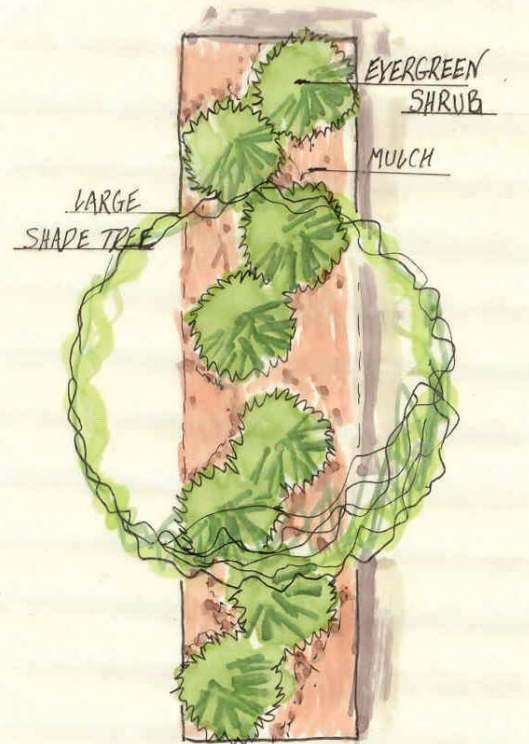


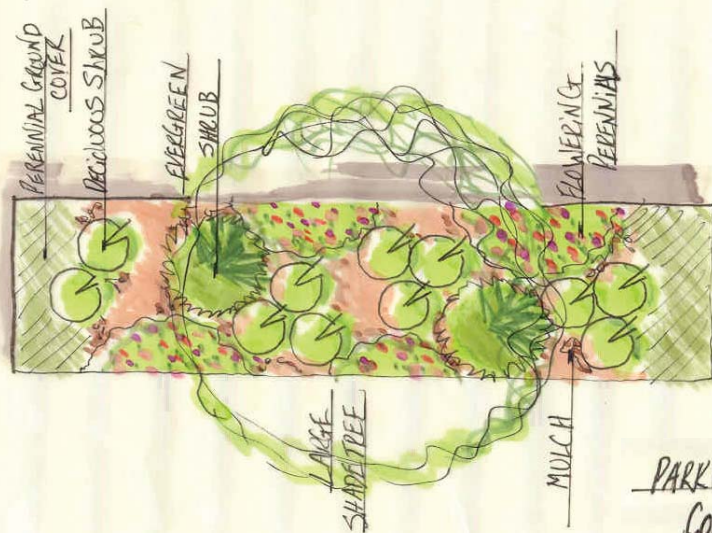
## Planting Concepts



PARKWAY PLANTING  
CONCEPT 3



PARKWAY PLANTING  
CONCEPT 1



PARKWAY PLANTING  
CONCEPT 2

## Additional Information

**Right-of-Way Planting Permit**  
[www.greeleygov.com/forestry/permit.aspx](http://www.greeleygov.com/forestry/permit.aspx)

**Site Plan Drawing Sheet**  
[www.greeleygov.com/forestry/permit.aspx](http://www.greeleygov.com/forestry/permit.aspx)

**An Illustrated Guide to Tree Planting**  
[www.greeleygov.com/forestry/permit.aspx](http://www.greeleygov.com/forestry/permit.aspx)

**Species Recommended ROW Planting**  
[www.greeleygov.com/forestry/permit.aspx](http://www.greeleygov.com/forestry/permit.aspx)

**Short Form Building Permit  
for Sprinkler Systems**  
[www.greeleygov.com/BuildingInspection](http://www.greeleygov.com/BuildingInspection)

**Landscape Requirements**  
[www.greeleygov.com/CommunityDevelopment/PlanningDocuments.aspx](http://www.greeleygov.com/CommunityDevelopment/PlanningDocuments.aspx)

**New Lawn Installation Guidelines**  
[www.greeleygov.com/Water/variances.aspx](http://www.greeleygov.com/Water/variances.aspx)

**Water Conservation**  
[www.greeleygov.com/wc](http://www.greeleygov.com/wc)

**Xeriscape**  
[www.greeleygov.com/Water/xeriscape.aspx](http://www.greeleygov.com/Water/xeriscape.aspx)

## Community Development

1100 Tenth Street, Suite 202  
 Greeley, CO 80631  
 (970) 350-9802  
 fax: (970) 350-9800

## City of Greeley Species Recommended for Right of Way Planting



## Plant Lists

The plants listed below are recommended for parkway landscaping. These species have performed well in Greeley, but there are many others which may be acceptable. The names shown in italics are the scientific name of the plant. Landowners must obtain a permit from the Community Development Department before planting in the parkway for plantings other than sod or non-woody ground cover.

Some **large shade trees** qualify for planting in rights-of-way. A 35' minimum spacing is required.

- Kentucky Coffeetree *Gymnocladus dioica*
- Western Catalpa *Catalpa speciosa*
- Common Hackberry *Celtis occidentalis*
- Thornless Honeylocust *Gleditsia triacanthos*
- Red Oak *Quercus rubra*
- Bur Oak *Quercus macrocarpa*
- English Oak *Quercus robur*
- American Linden *Tilia americana*
- European Linden or other Linden species *Tilia europaea*
- Hybrid Elm varieties *Ulmus* spp.



Western Catalpa

**Ornamental trees** are smaller and are appropriate in parkways. A 25' minimum spacing is required.

- Ohio Buckeye *Aesculus glabra*
- Goldenrain Tree *Koeleruteria paniculata*
- Hawthorn *Crataegus* spp.
- Flowering Crabapple *Malus* spp.
- Japanese Pagoda Tree *Sophora japonica*
- Littleleaf Linden *Tilia cordata*
- Plum and Cherry species *Prunus* spp.
- Flowering Pear species *Pyrus* spp.
- Japanese Tree Lilac *Syringa reticulata*



Flowering Crabapple

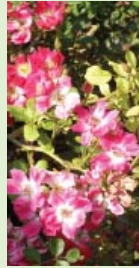


Japanese Tree Lilac

There are many **shrubs** available through local nurseries. Be sure to choose varieties that have a mature height of **18" or less**. Below are some appropriate shrub choices.

### Deciduous

- Cranberry Cotoneaster *Cotoneaster apiculatus*
- Pink Beauty, Sutters Gold Potentilla *Potentilla fruticosa*
- Dwarf Fragrant Sumac *Rhus aromatica 'gro-low'*
- Carpet Variety Roses *Rosa* spp.
- Flowering Choice, Daphne, Little Princess, Magic Carpet *Spirea* spp.
- Compact European Cranberry *Viburnum opulus 'nanum'*



Carpet Variety Roses



Juniper

### Evergreen

- Alpine Juniper *Juniperus communis*
- Broadmoor Juniper *Juniperus sabina*
- Calgary Carpet Juniper *Juniperus sabina*
- Green Carpet Juniper *Juniperus communis*
- Icee Blue® Juniper *Juniperus horizontalis*
- Prince of Wales Juniper *Juniperus horizontalis*



There are many **flowering perennials** that are well suited to parkway planting. Be sure to choose varieties that have a mature height of **18" or less**.

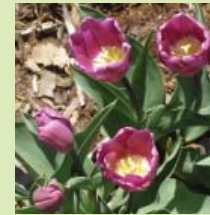
- *Alyssum*
- *Aster*
- Blanket Flower *Gaillardia*
- Coral Bells *Heuchera* spp.
- *Coreopsis*
- Cut leaf daisy *Erigeron*
- Daylily Little Business, Little Senior, Stella D'Oro *Hermocallis* spp.
- Evening Primrose *Oenothera* spp.
- Flax *Linum*
- Gazania
- Hyssop *Agastache*
- *Iris* Dwarf varieties
- Lavender *Lavandula*
- Ornamental Grasses Indian Rice, Blue Fescue, Japanese Blood
- Panchito Manzanita *Arctostaphylos coloradoensis*
- Pinks *Dianthus*
- *Potentilla* spp.
- Pasqueflower *Pulsatilla*
- Sage *Artemesia*
- *Salvia*
- Spring Bulbs
- Sulphur Flower *Erigonum*
- Whirling butterflies *Gaura*



Coral Bells



Stella D'Oro Daylily



Spring Bulbs: Tullips

### Groundcovers

- Cinquefoil *Potentilla*
- Creeping Colorado Holly *Mahonia repens*
- Creeping Phlox *Phlox subulata*
- Creeping Thyme *Thymus*
- Iceplant *Delosperma*
- Lambs Ear *Stachys byzantina*
- Nettle *Lamium* spp.
- Periwinkle *Vinca* spp.
- Pussy toes *Antennaria*
- Snow in Summer *Cerastium*
- Soapwart *Saponaria*
- Wild Strawberry *Fragaria*
- *Sedum* spp.
- Speedwell *Veronica* spp.
- *Verbena*



Creeping Phlox



Iceplant

## Regulations

1. All landscaping and/or plantings upon public rights-of-way must be preceded by an approved Right-of-Way Planting Permit issued by the Community Development Department except for sod or non-woody ground cover. Any illegal or unauthorized planting or volunteer growth occurring after January 1, 1977, may be ordered removed.
2. Unless otherwise authorized in the permit, all newly-planted street trees should be planted midway between the sidewalk and the curb. Large trees (over 20' in height) should be spaced at least 35' apart to allow for safe, healthy, attractive growth. Smaller types of trees, when designated as such by the permit, may be spaced to a minimum of 25' apart.
3. No trees will be planted closer than 5' to any driveway or alley, nor be planted in such a manner that eventual growth cannot be reasonably maintained to avert interference with, or obstruction of, any improvements installed for the public benefit such as traffic and street signs and lights, fire hydrants, overhead utility wires, street lights, utility poles, water meters, etc.
4. At edges of streets where a space of less than 5' in width exists between the curb and the abutting private property line, no trees or woody plants should be planted on the public area so involved.
5. Where the combination sidewalk-curb and gutter have been installed, no tree plantings are to be made closer than 5' from the edge of any concrete installation.
6. Trees are not to be planted within 10' of either side of water, sewer, or storm drain service lines.
7. No more than 6 of the same plant genus may be used consecutively in a row-type planting.