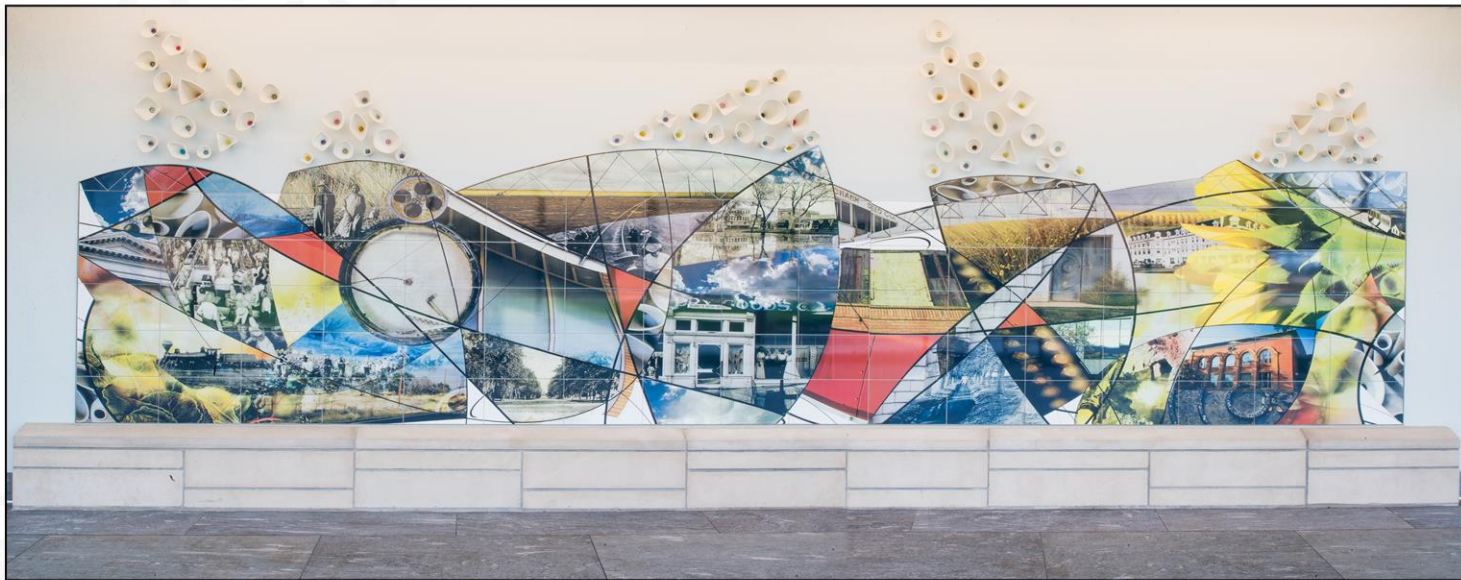


The City of Greeley  
***Art Master Plan***



*November 2018*



# ART MASTER PLAN MISSION

*The Greeley Public Art Master Plan (AMP) will guide the creation of distinctive places through art projects that build awareness, appreciation and understanding of the qualities that have made Greeley great.*

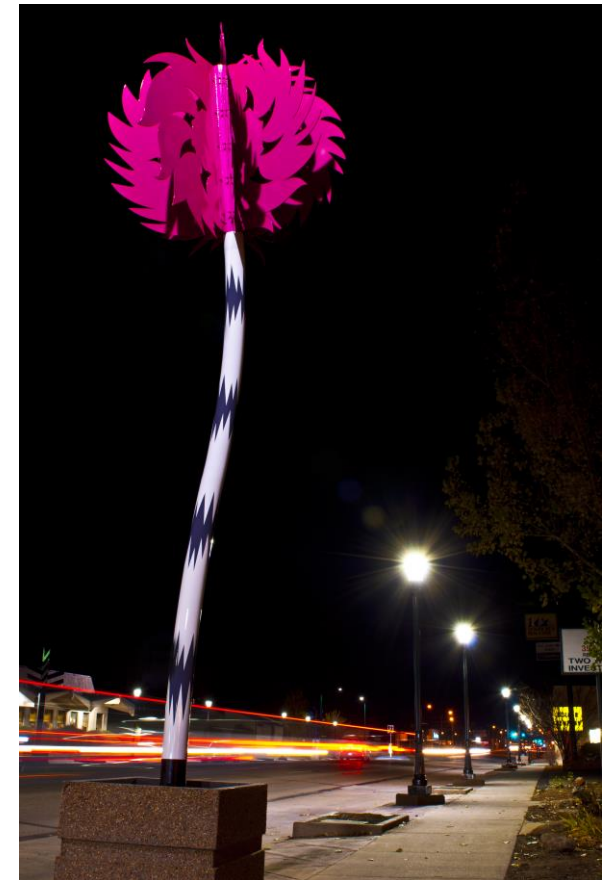
*The City of Greeley recognizes the importance of art forms in public places and acknowledges the diversity of the public who enjoys such art.*

The Greeley Art Commission, a twelve member volunteer board, is appointed by the Greeley City Council to administer the provisions of the Public Art Ordinance relating to the acquisition of works of art and their display. City staff from the Culture, Parks and Recreation Department provide support to the Art Commission by installing and maintaining the art pieces. Recommended projects are submitted to City Council for final approval.

The mission of the Art in Public Places Program is to integrate the work and thinking of artists, along with that of other design professionals, into the planning, design, building, and development of Greeley in order to affect the highest standards of design for the City. The intent of the program is to expand opportunities for residents to experience art in public places, thereby creating visually pleasing and aesthetic environments.

It is the expressed desire of the City to promote the creation of a variety of visual arts, enhance new and existing public spaces, and distribute works of art throughout the city.

Cover Art: City Center Artists: Amy Baur & Brian Boldon



*'Awareness Tree' by artist Pete Niehoff  
located at 8<sup>th</sup> Ave. & 15<sup>th</sup> St.*

***Public Art is an essential component of a thriving community!***

## ADMINISTRATION & WHAT'S NEW

### Greeley City Council

Mayor John Gates  
 Jon Smail, Ward I  
 Brett Payton, Ward II  
 Michael Fitzsimmons, Ward III  
 Dale Hall, Ward IV  
 Stacy Suniga, At-Large  
 Robb Casseday, At-Large, Mayor Pro Tem

### 2018 Greeley Art Commission Board

Ed Rogers	Chair/Art Educator
Dik Munson	Vice Chair/Professor Emeritus of Art
Kristin Zasada	Ward I/Realtor
Laurel LaBonde	Ward II/Public Affairs Specialist
Shirley Llafet	Ward III
Jim Klingman	Designer
Susan Benson Todd	Artist
Thomas DeVore	At-Large/Artist
Todd Hampton	Parks & Recreation Board Representative
Mick Todd	Water & Sewer Board Representatives

### What's New?



### *Excellence in Community Design Awards*

2014 — “Rain Symphony” by artist Joshua Weiner located at Homestead Park, N. side.



2016 — “Go West” by artist Lisa Cameron Russell located at Centennial Village.



2017 — “Tabula Rasa” by artist Lina Sanchez located near 9th Ave. and 8th St. Plaza.

The Art Master Plan has been developed to enhance and reinforce the goals, visions and values of the City of Greeley and its citizens through art.

*Public Art is an essential component of a thriving community!*

## TABLE OF CONTENTS

<b>Mission</b>	<b>1</b>	<b>List of Recommended Projects 2018-2022</b>	<b>12</b>
<b>Administration and What's New</b>	<b>2</b>	<b>Paths, Parks and Byways</b>	
<b>The Plan Summary</b>		Island Grove	<b>13</b>
Introduction	<b>4</b>	Poudre Trail, Ponds, and Heritage Corridor	<b>13</b>
Vision, Goals and Objectives	<b>5</b>	Luther Park on 10th St near 18th Ave	<b>13</b>
2014—2018 Accomplishments	<b>5</b>	<b>Streets and Entryways</b>	
Scope and Implementation	<b>5</b>	Greeley Entryway Hwy 34 & Hwy 287	<b>14</b>
<b>Recent Installations</b>		Major Intersection at Hwy 34 & 35 <sup>th</sup> Ave.	<b>14</b>
Large Mural	<b>6</b>	16 <sup>th</sup> Street Corridor	<b>14</b>
8 <sup>th</sup> Street Plaza Walkway	<b>6</b>	Greeley Entryway North Hwy 85	<b>14</b>
City Center Phase I	<b>6</b>	<b>Civic &amp; Private Buildings</b>	
Woodbriar Park	<b>6</b>	Mercado District / Transit Center, N 11th Ave	<b>15</b>
<b>Selecting Sites and Projects</b>		<b>Special Projects</b>	
Collaborations & How does Greeley Rate	<b>7</b>	Illustrated Greeley Water History Book	<b>15</b>
Site Selection	<b>8</b>	Greeley Water System Model	<b>15</b>
Project Selection	<b>8</b>	Greeley-Weld County Airport & Leprino	<b>15</b>
Incorporated Themes	<b>9</b>	<b>On-going Programs</b>	
Art Awareness and Education	<b>9</b>	Sculpture on Loan	<b>16</b>
Maintenance	<b>9</b>	Community Outreach	<b>16</b>
Prioritization Process	<b>10</b>	Paint the Town Murals	<b>16</b>
<b>Future Opportunities of Note</b>		<b>Appendix</b>	
Project & Site Options for full-scale projects	<b>11</b>	Completed Goals 2009-2014	<b>17</b>
Location Options for Acquisitions & Donated Artwork	<b>11</b>	Public Art Ordinance	<b>18</b>
		Existing Outdoor Art List	<b>21</b>
		Online Public Art Map	<b>34</b>

*Public Art is an essential component of a thriving community!*

## THE PLAN SUMMARY

### Introduction

The term “public art” refers to any art or design that has been created specifically to be sited in the public domain. All forms of public art attract attention and heighten the awareness of, and encourage interaction with public spaces. It has a positive impact on a community and helps to define and reveal the unique character of a specific neighborhood. Public art helps define a community that is unique thereby enhancing its image and appeal.

The economic and cultural diversity of Greeley contributes to a quality of life that residents enjoy. Greeley is not only an economic hub within the region, but also an educational hub with such educational institutions as the University of Northern Colorado (UNC), Aims Community College and the Institute of Business and Medical Careers (IBMC).

The updated 2018 Art Master Plan is integrated with the 2009 & 2014 Art Master Plans and is in alignment with the Imagine Greeley Comprehensive Plan. The Plan is proactive and advocates for the community and economic development through consideration of the City’s priorities.

City Council finds that all Water, Sewer and Stormwater funds used for the Art in Public Places Program provide a betterment to those utilities, and that the acquisition, lease, maintenance, repair, and display of works of art is beneficial to the ratepayers.

Flexibility was implemented in the Art Master Plan (AMP) from the start with the knowledge that one cannot always predict future growth or the opportunities to work with outside entities.



*'Moire' Tree* by artist David Farquharson  
located at 8<sup>th</sup> Ave. & 14<sup>th</sup> St.

*Objective GC-3.1 Community Character -Work with residents, businesses, and property owners to define and identify desirable characteristics of their neighborhoods or areas of the city to create neighborhood and special area plans. Reflect the community's character through the design of new developments, streetscapes, public art, landscaping, and related features.*

*-- Imagine Greeley Comprehensive Plan*

***Public Art is an essential component of a thriving community!***



## Vision, Goals and Objectives

- 1.) The plan will create the framework for a series of public art projects that relate to the City of Greeley's missions and maximize community exposure.
- 2.) The plan is founded on the principle that public art can create remarkable places.
- 3.) The beauty and function of public art projects will encourage public interest, involvement and education that convey a sense of importance relating to city and community.
- 4.) The plan will integrate art into public infrastructure when feasible and appropriate.

## Scope and Implementation - The Art Master Plan:

- 1.) Is implemented in accordance with the Greeley Public Art Ordinance and Guidelines by the Greeley Art Commission, with the support of the Culture, Park and Recreation staff.
- 2.) Is informed by, aligned with, and responsive to existing City of Greeley values.
- 3.) Supports cross-departmental and cross-discipline collaboration.
- 4.) Creates unique opportunities ranging from large scale projects to "discovery" sites.
- 5.) Selects sites that encompass all areas of Greeley.
- 6.) Secures best artists for public art projects: local, regional, national and international.
- 7.) Remains flexible to change.

## 2014 – 2018 Public Art Program Accomplishments *(see previous Art Master Plan accomplishments in Appendix pg. 1)*

- 1.) Received celebratory recognition from Greeley Unexpected.
- 2.) Began a new Utility Cabinet Mural program with three completed traffic control cabinets.
- 3.) Collaborated with the Downtown Development Authority to complete 13 murals in the downtown Art Alleyway.
- 4.) Completed the 4 year project 'Go West' with artist Lisa Cameron Russell, a project that includes 32 images painted on metal panels from historical photos within approximately 2000 linear feet of artistic fencing.
- 5.) Proposed, developed and managed the four year, \$300,000 Uptown Trees project which resulted in the addition of thirty-one artistic tree sculptures along 8th Avenue and earned a short segment on 9 news!
- 6.) Connected UNC to Downtown Greeley with Artwork along 8<sup>th</sup> Avenue.
- 7.) Deepened the City's relationship with CDOT with the collaborative installation of 'Double Spinner' at their new west Greeley facility.
- 8.) Created and distributed complimentary Public Art Coloring Books to all 3rd graders every March in recognition of Youth Art Month., and created and distributed Public Art Coloring Sheets to local restaurants.
- 9.) Developed new collaborations with Envision and the Double Tree Hotel.
- 10.) Created the new online Art Finder map and Public Art Catalog.



*'Cybele' by artist John Vogl, traffic control cabinet design*

***Public Art is an essential component of a thriving community!***

## RECENT INSTALLATIONS

*Four new projects were approved by the Art Commission as collaborative opportunities arose; they were not listed in the 2014 Art Master Plan.*

### Large Mural – Pointillism style

The owners of Warm Hugs, located on the corner of 10<sup>th</sup> Street and 8<sup>th</sup> Avenue, offered their east facing wall to be the new home for a bright and cheerful mural. This location is one of the first things visitors see as they enter the downtown area.



*'Art is the Point'* by artist Eleanor Yates  
funded in part by the Downtown Development Authority.

### 8<sup>th</sup> Street Plaza Walkway

The ambience, character and atmosphere of 'place' already existed in the 8<sup>th</sup> Avenue Walkway and just needed some enhancement. The seven archways are now filled with original paintings, archival photographs and led lighting that create a completely new artistic experience.



*'Spectrum'* by artist Frank Garza  
funded in part by the Downtown Development Authority.

### City Center Phase I

Greeley's new municipal government building, will deliver key services to citizens and is intended with its architecture to be open, transparent and welcoming. A unique work of art has been installed near the entrance to the City Council Chambers. The artists' self-developed process of transferring photos with frit glaze decals onto ceramic tiles was used to showcase past and present day images of Greeley. As the viewer looks above the tilework they will see organic ceramic shapes created by a 3-D printer. This artwork will lend itself to carry over into a second phase of the building if added in the future.



*'Cadence'* by artists Amy Baur and Brian Boldon  
located in the new City Center

### Woodbriar Park

Creating Earth Art with natural materials found on site such as rock, soil, sand, water and old trees can increase awareness of the earth and challenge our traditional definitions of art. An Interactive and informative diversion water plaza was installed as an integral part of the park, along with the playground where natural play is a key element and the water detention area that also serves as a play field.



*'Water Works: Maintaining the Flow'*  
by artist Laurie Lundquist & Matrix Design Group  
funded in part by Poudre Heritage Alliance/CALA

***Public Art is an essential component of a thriving community!***

## SELECTING SITES AND PROJECTS

*The Art Commissioners will continue to meet with local businesses and developers to explore possibilities of the inclusion of public art into their projects. The Master Plan will seek productive partnerships as a way to deliver the most efficient services to the community by sharing facilities, funding, programs, and with mutual outreach and aid.*

### Collaborations

*Partnerships and/or extended return of investments amount to over \$1,005,000.00 since the inception of the Public Art program; this includes:*

CDOT	Historic Preservation Board
Chamber of Commerce	Individual artists and private donors
Chase Bank	Monfort Family Foundation
Doubletree Hotel	National Board of Chiropractic Examiners
Downtown Businesses	Poudre Heritage Alliance
Downtown Development Authority	Poudre Trail Board
Envision	Rodarte Kids
Farr Family	Robert G. Tointon
Friends of Museums Guild	UNC College of Art & Design
Greeley Chorale	Weld County Veterans Memorial Committee
Greeley Philharmonic Orchestra	Weld County Fallen Officers Memorial Fund
Greeley Stampede	Weld County School District 6
Greeley Tribune	Weld County Sheriff
High Plains Library	

*How does Greeley rate in comparison to nearby communities with similar Public Art Programs?*

Communities with ongoing 1% for art programs	Quantity in Collection	Value of Collection	Year 1% for Art Program began
Loveland <a href="http://www.ci.loveland.co.us/departments/cultural-services/art-in-public-places">http://www.ci.loveland.co.us/departments/cultural-services/art-in-public-places</a>	475	\$10.4 M (69% private donation)	1985
Longmont <a href="https://www.longmontcolorado.gov/departments/departments-a-d/community-services-department/art-in-public-places">https://www.longmontcolorado.gov/departments/departments-a-d/community-services-department/art-in-public-places</a>	112	Information not available	1989
Fort Collins <a href="https://www.fcgov.com/artspublic/app-overview.php">https://www.fcgov.com/artspublic/app-overview.php</a>	801	Information not available	1995
Greeley <a href="https://greeleygov.com/activities/public-art">https://greeleygov.com/activities/public-art</a>	557 pieces	\$3.7 M (10% private donation)	1998

*Public Art is an essential component of a thriving community!*



## Site Selection

Public art should contribute to city life and people's use and enjoyment of public places. Sites may be chosen for a variety of reasons. It may be a historically significant story about a person, an event or the community. The site may be selected for its visibility or simply because property development is offering an opportunity for artwork. Public art can welcome people to town, mark a town center or provide shade and resting places. Sometimes art is located in high traffic areas, especially those places frequented by pedestrians. Other common sites may include: entryways, public buildings, neighborhood communities, schools, active adult centers, police and fire stations, parks and trails, and town centers where people walk and gather. Public art can advance overall urban design by beautifying otherwise dull aspects of public works infrastructure.



*'Flutterby' by Joshua Wiener  
located at 23rd Ave. & 10th St.*

## Project Selection

The size and character of a work of art should reflect and enhance the size and character of its landscape setting. The Art Master Plan identifies areas for the placement of both monumental scale and intimate scale artwork. In addition, the plan also recommends sites for series of artwork. Conceived as one work, pieces in a series can relate to commonly found landscapes. Some examples are: the Poudre Trail Markers and the Uptown Trees.

Public Art of a monumental scale makes a large impression, is easily visible, and creates landmarks that often become collectively meaningful and architecturally prominent.

Public art of an intimate scale tends to relate directly to the individual experience in a more personal manner. While both can create landmarks, intimately scaled public art enhances a sense of discovery and adds to the pedestrian experience.



*'Angel on Wheel' by Russell Whiting  
located at Glenmere Park*

*"Devotion and Service" by artist Ken Williams  
located at Fire Station #1*



***Public Art is an essential component of a thriving community!***

## Incorporated Themes

Public Art can commemorate events, honor individuals, or identify historic locations and can be based on its educational value. It can also create an opportunity for the expression of the diversity and unique character of the city and its people. As Greeley works to enhance the quality and character of its public buildings and spaces, there is a tremendous opportunity to illustrate the rich, visual heritage of the region. Public Art within the city gives a sense of discovery and vibrancy to public spaces. Greeley is committed to providing access to art and creating an environment of enrichment for all citizens.

## Art Awareness and Education

Outreach is critical to the success of the Public Art program. The public is encouraged to participate in all aspects of the process including: serving on committees, developing projects with artists, attending art dedications, and participating in educational activities such as public art tours and lectures. Care is taken to foster relationships with public schools by arranging artists' visits, creating public art curriculum, and involving students in public art projects. Information about the program is made available through brochures, maps, reports and the City's website.



*'Grassland' by artist Barbara Baer  
located at 8th Ave & 21st St.*



## Maintenance

To ensure the highest quality presentation of public art, it is important to consider the durability, maintenance needs, and appropriateness of each installation. Construction details such as mounting and anchoring hardware, support structures, and other physical connections should be thoughtfully designed and implemented with care. For outdoor works, special attention should be given to landscape design, particularly the topography around the work of art. Long-term outdoor installations will be made to withstand natural elements such as UV exposure, wind, rain and other forces. Greeley's Public Art Program has a comprehensive maintenance plan that retains 3% of the value of the art collection for ongoing maintenance and repair.

*Restoration and reinstallation of 'The Box' by artist Eleanor Yates  
located on the south side of the Downtown Recreation Center*

***Public Art is an essential component of a thriving community!***

**Prioritization Process**

*The following site/project suggestions were gathered from Greeley Art Commission, City Department Directors, and Assistant City Manager.*

COG City Center/Civic Bldgs.  
 COG Transit Center  
 COG Golf Courses  
 COG Active Adult Center  
 COG Greeley PD  
 COG Rodarte Center area  
 COG Fire Stations  
 Streets 10th St Corridor  
 Streets 10th St from 101 & 117 Ave  
 Streets 16th St -Canal projects behind 7-11  
 Streets 18th St & 1st Ave.  
 Streets 20th St between 47th Ave & 59th Ave  
 Streets N 11th Ave—Mercado Area  
 Streets 23rd Ave out to Hwy 34—Hillside area  
 Streets 23rd Ave and Reservoir Road, NW corner  
 Streets 35<sup>th</sup> Ave under power lines E of Greeley West  
 Streets 35<sup>th</sup> Ave by Home Depot  
 Streets 54<sup>th</sup> Ave at 10<sup>th</sup> St.  
 Streets 42<sup>nd</sup> Ave at 22<sup>nd</sup> St.  
 Streets 47<sup>th</sup> Ave & 16<sup>th</sup> St SW corner  
 Streets 47<sup>th</sup> Ave and 20th St, NW corner  
 Streets 47<sup>th</sup> Ave & 4<sup>th</sup> St under power lines  
 Streets 59th Ave and 10th St—SE corner  
 Streets 65th Ave & 10th St  
 Streets 71<sup>st</sup> Ave south of 10<sup>th</sup> St in rock median.  
 Streets Art in Islands of Residential streets  
 Streets Overpasses  
 Streets Hwy 85 North Entryway  
 Streets Hwy 34 & Hwy 287 near Entryway Sign  
 Streets Reservoir Rd W of 23rd Ave  
 Streets Centerplace Drive – North side  
 Streets Triangles at major intersections  
 Parks Poudre Heritage Corridor  
 Parks Luther Park on 10th St

Parks Sunrise Park area  
 Parks Farr Park—13th Ave & 26th St  
 Parks Epple Park—4th St & 43rd Ave  
 Parks Centennial Park—23rd Ave & 22nd St  
 Parks Island Grove—501 N 14th Ave  
 Parks Island Grove Playground  
 Parks Balsam Park  
 Parks Balsam Dog Park  
 Parks Promontory Park  
 Trails Bike paths  
 Trails Poudre Trail/Greenway  
 Trails Sheepdraw Trail  
 Trails Sheepdraw & Poudre Trail on 59<sup>th</sup> Ave

**The Commission will seek partnerships with:**  
 Schools near slow zones  
 UNC – 1700 9th Ave.  
 AIMS – 5401 W 20th St.  
 Greeley Airport, Leprino – 1302 1st Ave.  
 Banner Health -16th St from 16th to 21st Avenues  
 CDOT  
 Libraries  
 Buckle Club at Island Grove

**All suggestions were submitted to the Art Commission to be prioritized using the following criteria:**  
 1.) Alignment with Public Art Guidelines  
 2.) Significance to Greeley’s culture, history and community  
 3.) Potential to maximize funds for art purchase  
 4.) Visibility and impact of aesthetic characteristics  
 5.) Ability to incorporate into other city plans and objectives  
 6.) Art awareness and education opportunities  
 7.) Collaborations with public and private organizations  
 8.) Budget & Administration time

*Public Art is an essential component of a thriving community!*

## Future Opportunities of Note

### Project/Site options for full-scale projects:

- Centerplace on 47<sup>th</sup> Ave & Hwy 34
- N 8th Ave Entryway, JBS, Leprino
- NCMC
- UNC
- Meeker House
- Water Tower at Highland Hills

### Location Options for Art Acquisitions and Donated Artwork:

#### Paths, Parks and Byways

- Sheepdraw Trail
- Sunrise Park area
- Farr Park
- Epple Park
- Balsam Park

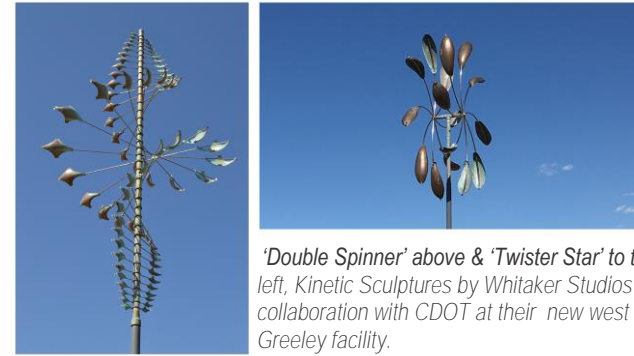
#### Civic & Private Buildings

- Libraries
- Boomerang Golf Course
- Fire Stations
- Greeley Police Department-Outside
- Rodarte Center

#### Streets and Entryways

- Promontory
- Hillside area 23rd Ave to Bypass
- Reservoir Rd W. of 23rd Ave
- 42nd Ave & 22nd St Islands
- 71st Ave S of 10th St—new median
- 59th Ave and 10th St on SE corner

## Past Completed Opportunities of Note



*'Double Spinner' above & 'Twister Star' to the left, Kinetic Sculptures by Whitaker Studios in collaboration with CDOT at their new west Greeley facility.*

*'Come to our Show' by artist Debbie Dalton  
A unique opportunity to contribute to the  
Aven's Village all-inclusive playground at  
Island Grove and to build a new  
relationship with Envision artists,*



*Downtown Alleyway Art mural by artist Armando Silva. An unexpected opportunity to collaborate on a 3 year project with the Downtown Development Authority and local businesses.*

***Public Art is an essential component of a thriving community!***



# RECOMMENDED PROJECTS FOR THE MASTER PLAN 2018-2022

## **Paths, Parks and Byways**

Island Grove  
Poudre Trail, Ponds & Heritage Corridor  
Luther Park on 10th St near 18th Ave  
East Memorial Park

## **Streets and Entryways**

Hwy 34 & Hwy 287 near Entryway Sign  
35th Ave and Hwy 34  
Hwy 85 North Entryway

## **Civic & Private Buildings**

Mercado District/Transit Center, N 11th Ave

## **Special Projects**

Illustrated Greeley Water History Book  
Greeley Water System Model  
Greeley Airport, Leprino

## **Ongoing Programs**

Sculpture on Loan  
Community Outreach  
Paint the Town Murals

*Public Art is an essential component of a thriving community!*

## PATHS, PARKS AND BYWAYS

Greeley has over 752.3 acres of developed parkland, in addition to three park sites and portions of Island Grove Regional Park which are undeveloped. From largest to smallest, Greeley’s park types include: Regional Parks, Community Parks and Sports Complexes, Neighborhood Parks, Special Purpose Parks and Pocket Parks.

### Island Grove Park

Trees planted as far back as 1869, spacious lawns, and a range of facilities that border the Poudre River have earned Island Grove Regional Park a reputation as one of the most picturesque and versatile events complexes in the nation. Island Grove is a multi-use events complex owned by the City of Greeley and Weld County located on 145 acres. Many areas have been suggested for art locations in the 2017 Island Grove Master Plan.

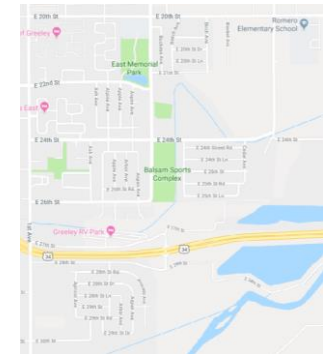


### Luther Park & No. 3 Ditch

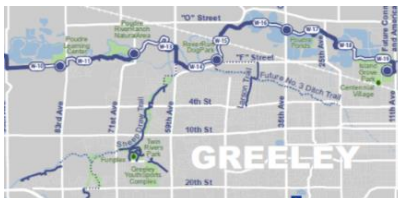
Art Commissioners, through the City of Greeley, will recommend the installation of artwork that will enliven the bare strip of gravel on 10<sup>th</sup> Street near 18<sup>th</sup> Avenue. The No. 3 Ditch is 140 years old and is essentially the reason Greeley survived in what was then called the “Great American Desert”. Dug by huge, horse-drawn plows in 1870, the ditch has now progressed to the computer age.

### East Memorial Park

East Memorial Park will be one focus for adding art to east Greeley as it is renovated by the Parks Dept. The neighborhood as a whole offers many opportunities for smaller art enhancements such murals in the forms of Storm Drain Murals, Traffic Cabinet murals or underpass murals. Major art installations might include natural play Earthwork projects as the open lands are converted to parks in the upcoming years.



### Poudre Trail, Ponds and Heritage Corridor



Greeley’s natural areas that residents can experience and observe nature are primarily focused along the Sheep Draw drainage and the Poudre River corridor. These lands serve as conservation, outdoor recreation and educational sites. The Art Commission will integrate art with respect to the protection and education of natural resources, wildlife habitats, vegetation, and water resources.

*Public Art is an essential component of a thriving community!*

## STREETS AND ENTRYWAYS

### Greeley Entryway at Hwy 34 & Hwy 287

Most often, the image of community is initially formed by the traveling public along its major roadways. The addition of artwork will help accomplish the goal of creating a “Home Town” character. Blending our agricultural heritage with progressive cultural qualities will also help build community pride.



### Major Intersection at Hwy 34 and 35th Ave



Art Installations along Greeley’s main highways are a bit sparse and these streets are heavily traveled. The addition of outdoor sculptures would shout out the message that Greeley appreciates the cultural arts to all who drive by. As you can see from this overhead shot, the opportunity to add artwork is great in this area, particularly on the SW corner.

### 16<sup>th</sup> Street Corridor

City Planning is currently reviewing the renovation needs for 16<sup>th</sup> Street from 8<sup>th</sup> Ave to 10<sup>th</sup> Ave and artwork can be an integral part of the design. Thematic work along the corridor is being highly considered.



### Greeley Entryway North Hwy 85

For tens of thousands of visitors entering Greeley from north of town, including all travelers heading to and from the Airport, their first glimpse of our city is dull and uninviting. A creative, lively and welcoming work of art may help prospective citizens to look at Greeley as a place where they would like to relocate or to venture into for a visit.



*Left: Heading north on 85 from Airport Rd.  
Right: Heading east to Airport.*

*Transportation and Mobility 4.5: Enhance the main travel corridors used to travel to and from the airport with special attention to way-finding signage, well-defined and complete roadway systems, and attractive landscaping, public art or other distinctive community features. (Imagine Greeley Comprehensive Plan)*

***Public Art is an essential component of a thriving community!***

## CIVIC & PRIVATE BUILDINGS

### Mercado District/Transit Center

The new Transit Center is near Island Grove, A Street and 11<sup>th</sup> Ave and will have foot traffic as well as motorists driving by; artwork on the large wall on the north end of the building will have high visibility. Any type of a transportation theme will be welcome and old photos will be shared for artists to draw ideas from. Large outdoor wall art may include a painted mural or other attached materials and may encompass an educational component.



## SPECIAL PROJECTS

### Illustrated Greeley Water History Book

An illustrated Greeley Water History Book, suggested by several Water Board members, will be a collaborative effort between artists, historians and writers. Art funds will be used for the illustrative artwork.



### Greeley Water System Model

The City of Greeley will commission an artist to create a small scale interactive replica of Northern Colorado's water system. The scope and operations of the complex project that brings water to our once arid desert from the Western Slope will be better understood by children and adults when viewed on a smaller scale. The artwork would be most appropriate if placed near the Poudre River in an area that is frequented by students such as the Poudre Learning Center located at 8313 W F St.



Susan Todd sits by the C-BT Interpretive Area at the Northern Water Building in Berthoud, CO.

### Greeley-Weld County Airport and Leprino

Large scale buildings with thousands of visitors and high visibility provide endless options for adding artwork, from steampunk mechanical sculptures to expansive wall murals on concrete. A call to artists will be put out to see what the artist minds can conjure up.



*Public Art is an essential component of a thriving community!*



## ON-GOING PROGRAMS

### Sculpture on Loan

In 1995 as Greeley's permanent art collection was getting started, the City initiated the Sculpture on Loan Program with the placement of three pieces of art in Lincoln Park; it then grew to as many as fourteen on-loan sculptures. Now that the City has an outdoor collection of over 145 sculptures, it is time to try something new such as the first annual 2018 Sculpture on Loan Invitational exhibit! Providing a rotating art program on an annual basis provides new sculptures for the public to enjoy in the downtown Creative District every spring. Greeley's viewing population is encouraged to pick up the brochures and enjoy a self-guided walking tour of the current work.

### Community Outreach

The Greeleyart.com website includes a link to the interactive Art Finder map that will soon be upgraded with a dynamic content tool that will show locations and more information about each piece the City owns. The City of Greeley also reaches out to the community by printing annual Sculpture on Loan brochures and Public Art coloring books for District 6 students that help educate our young citizens about Greeley art. In addition, the Art Commission tends a booth each summer at the Arts Picnic in Lincoln Park to talk about the public art programs. Visitors vote for their favorite sculpture, and the winning artist receives the 'People's Choice Award' and the citizen input is taken into consideration when the City makes a purchase for the permanent collection.

### Paint the Town Murals

The Art Commission selects artists to create murals that acknowledge the diversity of our community with a broad range of social, cultural, historic, or abstract imagery. The Commission places importance on the artistic design, craftsmanship and quality of materials including anti-graffiti-coatings for maintenance purposes. Many of them are in collaboration with local business owners. Types of mural included are:

- **Wall Murals** - of all sizes are known to mitigate graffiti while adding new life to the area.
- **Utility Cabinets** - Traffic control cabinets come in a variety of shapes and sizes that can showcase a broad range of artwork. Artists either paint directly onto a cabinet or have their designs reproduced into vinyl wraps.
- **Storm Drain Art** – Emerging artists are hired to paint designs onto sidewalks near specific storm drains to bring attention to theme of 'Only Rain to the Drain' because the drains lead directly to our fresh rivers. This is in collaboration with the Stormwater Dept.
- **Stall Art**- will be our next big endeavor; we will begin by purchasing original artists' designs to add vinyl wraps the UCCC bathroom stalls to mitigate graffiti.



'SIT' by Patricia Vader 2017  
Sculpture on Loan Purchase



'Courage' mural by Armando Silva and Wes Sam Bruce  
an Art Commission collaboration with the Downtown  
Development Authority

*Public Art is an essential component of a thriving community!*

# APPENDIX

## 2009—2013 COMPLETED GOALS

- 1.) Dedicated the Art on Loan program to the Downtown Area.
- 2.) Expanded the City Permanent Art Collection and increasing the value of the collection by 50% from 2009-2013 through 1% projects, purchases and generous donations.
- 3.) Placed artwork in prominent places.
- 4.) Implemented the 2009-2013 City of Greeley Art Master Plan.
- 5.) Collaborated with UNC College of Art & Design, Weld County School District 6, Rodarte Kids, National Board of Chiropractic Examiners, Chase Bank, Monfort Family, Farr Family, Downtown Development Authority, Poudre Trail Board, Friends of Museums Guild, Weld County Sheriff, Weld County Fallen Officers Memorial Fund, Greeley Tribune, downtown businesses, individual art donors, Historic Preservation Board and City departments.
- 6.) Reorganization of funds to create one 'Public Art Fund' by combining Water, Sewer, Stormwater and General funds used for the Art in Public Places Program for better transparency.
- 7.) Improved Community Outreach through community events and private collaborations such as the Trail-athon and the National Board of Chiropractic Examiners.



*Public Art is an essential component of a thriving community!*

## PUBLIC ART ORDINANCE

### Chapter 2.33 Art Commission

- 2.33.010 Greeley Art Commission; establishment
- 2.33.020 Members; terms; replacement and removal
- 2.33.030 Powers and authority
- 2.33.040 Art in Public Places Program; purpose
- 2.33.041 Definitions
- 2.33.042 Funds for works of art
- 2.33.043 Project design
- 2.33.044 Incorporating art in purchases
- 2.33.045 Accounts established
- 2.33.046 Administration
- 2.33.047 Display of art in public places
- 2.33.048 Ownership
- 2.33.049 Exemptions

### Chapter 2.33

#### Art Commission

#### 2.33.010 Greeley Art Commission; establishment.

There is created a Greeley Art Commission, the purpose of which is to manage acquisitions including, but not limited to, the review and recommendation to Council of artwork which is proposed for donation to the City for public display. (Ord. 70, 2002 §1; Ord. 21, 1997 §1(part); Ord. 56, 1994 §1; Ord. 50, 1993 §1(part))

#### 2.33.020 Members; terms; replacement and removal.

The Greeley Art Commission shall be comprised of twelve (12) members; nine (9) members appointed by Council. One (1) designated member each from the City's Parks and Recreation Advisory Board, Planning Commission, Water and Sewer Board and six (6) community members, which shall include one (1) artist, one (1) art educator, and one (1) architect or designer. (Ord. 70, 2002 §1; Ord. 21, 1997 §1(part); Ord. 50, 1993 §1(part))

#### 2.33.030 Powers and authority.

The Greeley Art Commission shall establish rules of procedure and operating standards to define "work of art," artwork selection criteria, site selection criteria and any dollar amount or in-kind assistance to be required as a condition of acceptance to provide for installation and maintenance of any

work of art. Reports from the Commission, as well as recommendations, shall be made directly to the City Council. City staff supporting the Parks and Recreation Advisory Board, the Planning Commission and the Union Colony Civic Center Advisory Board shall provide support to the Greeley Art Commission in the execution of its duties. (Ord. 21, 1997§1(part); Ord. 50, 1993 §1(part); Ord. 70, 2002 §1)

#### 2.33.040 Art in Public Places Program; purpose.

The purpose of this Section is to provide a means to fund the acquisition of works of art by the City which shall become the City's permanent collection, to provide a means to select works of art for the collection, to provide for the display of the collection and to provide for the maintenance and repair of the works of art in the collection. (Ord. 70, 2002 §1; Ord. 42, 1998 §1)

#### 2.33.041 Definitions.

For the purpose of this Section, the following words or phrases shall be defined as set out below: Art in public places means any visual work of art displayed for two (2) weeks or more in an open City-owned area, on the exterior of any City-owned facility, inside any City-owned facility in areas designed as public areas or on non-City property if the work of art is installed or financed, either wholly or in part, with City funds or grants procured by the City. Commission means the Greeley Art Commission as created by Section 2.33.010. Construction cost means actual cost of any construction project with an estimated construction cost of fifty thousand dollars (\$50,000.00) or more, excluding engineering and administrative costs, costs of fees and permits and indirect costs, such as interest during construction, advertising and legal fees. Construction project means the construction, rehabilitation, renovation, remodeling, equipping or improvement of any public building, street, park, utility line or other public improvement by or for the City, including all associated landscaping, parking and the like, but excluding any improvements made by any special improvement district and any other improvements exempted by the City Council. Reserve account shall mean the Art in Public Places Reserve Account established by this Chapter. Work of art includes, but is not limited to, a sculpture, monument, mural, fresco, relief, painting, fountain, banner, mosaic, ceramic, weaving, carving and stained glass. Work of art would not include paving or signs. (Ord. 70, 2002 §1; Ord. 42, 1998 §1)

*Public Art is an essential component of a thriving community!*

#### 2.33.042 Funds for works of art.

All requests submitted to the City Council for appropriations for construction projects estimated to cost over two hundred fifty thousand dollars (\$250,000.00) and not more than fifty million dollars (\$50,000,000.00) shall include an amount equal to one percent (1%) of the estimated cost of such project for works of art. When the City Council approves the appropriations for any such project, one percent (1%) of the appropriated amount shall be deposited into the appropriate reserve account. If any construction project is partially funded from any source which precludes a work of art as an object of expenditure of such funds, the one percent (1%) shall be funded from project funding sources that are not so restricted. Money collected in the Art in Public Places Reserve Account shall be expended by the City for projects as prescribed by the Art in Public Places Guidelines. (Ord. 70, 2002 §1; Ord. 42, 1998 §1) Administration — Sec. 2.48.020 2-96 Supp. 23

#### 2.33.043 Project design.

In all construction projects costing between fifty thousand dollars (\$50,000.00) and two hundred fifty thousand dollars (\$250,000.00), one percent (1%) of the project cost will be utilized in conjunction with a City-selected artist who will participate in the design of the project for the purpose of incorporating works of art into all aspects of the project, both functional and aesthetic, to the fullest extent possible within the project budget. The cost of the artist's services shall be paid from the reserve account associated with the project budget. If not practical to incorporate artwork into the designated project, said funds can be moved to another like project with the recommendation of the Commission and approval by City Council. (Ord. 70, 2002 §1; Ord. 42, 1998 §1).

#### 2.33.044 Incorporating art in purchases.

The City shall endeavor to include artistic and aesthetic values in all construction projects, including those costing less than fifty thousand dollars (\$50,000.00), and in all purchases of personal property that may be located or used in places open to the public. (Ord. 70, 2002 §1; Ord. 42, 1998 §1)

#### 2.33.045 Accounts established.

(a) There is hereby established a reserve account with the General Fund to be known as the Art in Public Places Reserve Account. Said reserve account shall be credited with such funds as determined by the City Council and with all funds received by the City for visual art in public places, whether contributed, earned, secured through grants or otherwise obtained. Moneys credited to such account shall be expended only for acquisition, lease,

installation, maintenance and repair of works of art and expenses of administration of this Chapter. (b) There is hereby established a separate reserve account within the Water and Sewer Fund to be known as the Art in Public Places Reserve Account for such fund. Said reserve account shall be credited with such funds as the City Council may determine and with all funds from Section 2.33.042 that are paid by the utility for which said fund was established. Moneys credited to such reserve account shall be expended only for the acquisition or lease of works of art that provide a betterment to such utility or that are otherwise determined by the City Council to be for a specific utility purpose that is beneficial to the rate payers of such utility, and for the maintenance, repair or display of such works of art. Any limitations in other provisions of this Code on the purposes for which moneys in the Water and Sewer Fund used shall not prohibit the use of moneys in the Art in Public Places Reserve Account for such fund from being expended for the acquisition or lease of works of art or for the maintenance, repair or display of works of art. (Ord. 70, 2002 §1; Ord. 42, 1998 §1)

#### 2.33.046 Administration.

In accordance with Section 2.33.030, the Commission shall administer the provisions of this Chapter relating to the acquisition of works of art and their display. The Commission shall submit to the City Council, not later than March 1 of each year, an annual report for the prior year. (Ord. 70, 2002 §1; Ord. 42, 1998 §1)

#### 2.33.047 Display of art in public places.

(a) Works of art selected and implemented pursuant to the provisions of this Chapter may be placed in, on or about any public place or, by agreement with the owner thereof, any private property with substantial public exposure in and around the City. Works of art owned by the City may also be loaned for exhibition elsewhere, upon such terms and conditions as deemed necessary by the Commission and approved by Council. City officials responsible for the design and construction of public improvements in the City shall make appropriate space available for the placement of works of art, in consultation with the Commission. The Commission shall advise the department responsible for the particular public improvement of the Commission's decision regarding the design, execution and placement of works of art in connection with such project. For any proposed work of art requiring an extraordinary operation or maintenance expense, the

*Public Art is an essential component of a thriving community!*



Commission shall obtain prior written approval of the department head responsible for such operation or maintenance before approving the same.

(b) All works of art shall receive the prior review and approval of the Commission consistent with Section 2.33.030. None shall be removed, altered or changed without the prior review and approval of the Commission.

(c) No work of art financed or installed either wholly or in part with City funds or with grants procured by the City shall be installed on privately owned property without a written agreement between the Commission, acting on behalf of the City, and the owner specifying the proprietary interests in the work of art and specifying other provisions deemed necessary or desirable by the City Attorney. In addition, such written agreements shall specify that the private property owner shall assure: (1) That the installation of the work of art will be done in a manner which will protect the work of art and the public; (2) That the work of art will be maintained in good condition; and (3) That insurance and indemnification will be provided as is appropriate.

(d) Installation, maintenance, alteration, refinishing and moving of works of art shall be done in consultation with the artist whenever feasible.

(e) The Director of the Department of Cultural Affairs shall maintain a detailed record of all art in public places, including site drawings, photographs, designs, names of artists and names of architects whenever feasible. In conjunction with the Commission, the Director shall provide recognition to the artists of the Art in Public Places Program. The Director shall also place on file in the office of the City Clerk the Public Art Collection Policy Guidelines. (Ord. 70, 2002 §1; Ord. 42, 1998 §1)

#### 2.33.048 Ownership.

All works of art acquired pursuant to this Chapter shall be acquired in the name of, and title shall be held by, the City of Greeley, Colorado. (Ord. 70, 2002 §1; Ord. 42, 1998 §1)

#### 2.33.049 Exemptions.

The following are exempt from the provisions of this Chapter:

(1) All works of art in the collections of, on display at or under the auspices of the Greeley museums; and

All works of art on display in private City offices or other areas of City-owned facilities which are not generally frequented by the public. (Ord. 70, 2002 §1; Ord. 42, 1998 §1)

## Existing Outdoor Art

YEAR ACQUIRED *Donation **Partial Donation	TITLE	ARTIST NAME	LOCATION
**2018	Spectrum	Frank Garza	8th St Plaza Walkway, near 814 8th St.
**2018	Art is the Point	Eleanor Yates	809 10th St, east side of Warm Hugs building
*2018	Paired Hands	Andrew Tirado	Doubletree Hotel, 5 yr. agreement on placement
*2018	Sentinels	Brian Schader	Glenmere Park, near 15th Ave. and Glenmere Blvd.
2018	Cadence	Amy Baur & Brian Boldon	City Center, 1001 11th Ave.
**2018	Water Rights: Maintaining the Flow	Laurie Lundquist	Woodbriar Park, 2819 W. 19th St.
2018	Storm Drain Mural #2	Alexis Garcia	10th Ave, near Downtown Recreation Center
2018	Storm Drain Mural #3	Daylen Blehm	Sidewalk near 4421 Centerplace Drive
2018	Storm Drain Mural #4	Jaden Davis	King Soopers Parking lot of 6922 West 10th Street
2018	Storm Drain Mural #1	Kendra Myers	7th St, North side of Lincoln Park
*2017	Feathered Friends	Judith P. Meyers, with Liza Meyers Siegel	Glenmere Park, 14th Ave. and Glenmere Rd, S side roundabout
**2017	Alpha Centauri Uptown Tree	David Sheldon Asheville, NC	Near 1131 8th Ave.
**2017	Autumn Leaves Uptown Tree	Joshua Goss Greeley, CO	Near 1228 8th Ave.
2017	Color Splash Utility Cabinet	Eleanor Yates Greeley, CO	28th Ave. and 20th St., Median

*Public Art is an essential component of a thriving community!*

<b>YEAR ACQUIRED</b> *Donation **Partial Donation	<b>TITLE</b>	<b>ARTIST NAME</b>	<b>LOCATION</b>
**2017	Come See our Show	Debbie Dalton and Michael McBride, with Envision Artists, Greeley, CO	Aven's Village Playground, 1261 D St., in Island Grove Park
**2017	Courage	Wes Sam Bruce and Armando Silva Greeley, CO	719 7th St., W wall
2017	Cybele Utility Cabinet	Jon Vogl Denver, CO	11th Ave. and 23rd St., W side
**2017	Dancing in the Rain Uptown Tree	Gus and Lina Ocamposilva Clearwater, FL	Near 1105 8th Ave.
2017	Devotion and Service (S wall) Preventing Harm (W wall)	Ken Williams Pueblo, CO	Fire Station #1, 11th Ave. and 12th St.
**2017	Drop Uptown Tree	Arnold Martin Santa Cruz, CA	Near 1221 8th Ave.
2017	Grey Stone Grasses	Dale Lamphere Sturgis, SD	16th St. near 46th Ave., S side
**2017	Lollipop Tree Uptown Tree	John King Lyons, CO	Near 1201 8th Ave.
**2017	Rocketree Uptown Tree	Kristin DeSantis Lyons, CO	Near 1100 8th Ave.
**2017	The Eagles Nest Uptown Tree	Tim Adams Webster, City, IA	Near 1028 8th Ave.
**2017	The Singer of Hue Downtown Alley Art	Elijah Trujillo Greeley, CO	Near 9th and 8th St. plazas
**2017	Totem Uptown Tree	Patricia Vader Martinez, CA	Near 1212 8th Ave.
2017	Utility Cabinet #1 Utility Cabinet	Frank Garza Greeley, CO	9th Ave. and 16th St., SE corner
*2017	Feathered Friends	Judith P Meyers design; Liza Meyers Segal Greeley, CO	Glenmere Park, 14th Ave. and Glenmere Rd, S side

*Public Art is an essential component of a thriving community!*

<b>YEAR ACQUIRED</b> *Donation **Partial Donation	<b>TITLE</b>	<b>ARTIST NAME</b>	<b>LOCATION</b>
2016	Learning to Swim	Jade Windell Loveland, CO	8th Ave. and 9th St., SW corner
**2016	Mariachi Mural Downtown Alley Art	Alex Paozols Fort Collins, CO	Near 9th and 8th St. plazas
**2016	Got That Swing Downtown Alley Art	Susan K. Nelson Greeley, CO	Near 9th and 8th St. plazas
2016	World and Whale	Betony Coons Greeley, CO	Atlas Theatre, 709 16th St., W wall
*2016	Crescendo	Gary Alsum Loveland, CO	Union Colony Civic Center, 701 10th St., E side entrance
**2016	Eternal Leaves Uptown Tree	Ken McCall and Leslie Dixon Boise, ID	Near 1310 8th Ave.
**2016	Flying Animals Uptown Tree	Mary Ann Baker Mimbree, NM	Near 1320 8th Ave.
**2016	Moire' Tree Uptown Tree	David Farquharson Denver, CO	Near 1330 8th Ave.
**2016	Birds of Different Feathers Flock Together Uptown Tree	David Sheldon Asheville, NC	Near 1024 8th Ave.
**2016	Circuitree Uptown Tree	Ken McCall Boise, ID	Near 1135 8th Ave.
**2016	Colorado Big Sky Uptown Tree	Karen Yank Sandia Park, NM	Near 1029 8th Ave.
**2016	Double Spinner	Lyman Whitaker Salt Lake City, UT	CO Dept. of Transportation, 10601 10th St., E side of parking lot
**2016	Dragonfly Uptown Tree	Dr. Stephen Fairfield St. David, AZ	Near 1015 8th Ave.

*Public Art is an essential component of a thriving community!*

<b>YEAR ACQUIRED</b> *Donation **Partial Donation	<b>TITLE</b>	<b>ARTIST NAME</b>	<b>LOCATION</b>
**2016	Geometry of Flight Uptown Tree	Andrew Davis Lafayette, CO	Near 1130 8th Ave.
2016	Go West CV Fence IV	Lisa Cameron Russell Fort Collins, CO	Centennial Village, 1475 A St., N side
**2016	Jazz Percussionist Downtown Alley Art	Brandon Malaty Greeley, CO	Near 9th and 8th St. plazas
**2016	Music Lifts the Spirit Downtown Alley Art	Ruth Wydeven Greeley, CO	Near 9th and 8th St. plazas
2016	Play Bow	Don Kennell Santa Fe, NM	Island Grove Regional Park, A St. near 14th Ave.
**2016	She who Grew From Trees Uptown Tree	Robert Barnum Mecosta, MI	Near 1215 8th Ave.
**2016	Soundscape Downtown Alley Art	Aaron Best Greeley, CO	Near 9th and 8th St. plazas
**2016	Tabula Rasa Downtown Alley Art	Lina Sanchez Greeley, CO	Near 9th and 8th St. plazas
**2016	Tree in Conversation with the Stars Uptown Tree	Judith P. Meyers, with Liza Meyers Siegel Greeley, CO	Near 1008 8th Ave.
2016	Twister Star	Lyman Whitaker Salt Lake City, UT	83rd Ave. and Hwy 34, NE corner
2015	Grassland	Barbara Baer Denver, CO	8th Ave. near 23rd St., median
2015	Angel on Wheel	Russell Whiting Breaux Bridge, LA	Glenmere Park, 1600 Glenmere Blvd, S side
2015	Flutterby	Joshua Weiner Boulder, CO	23rd Ave. and 10th St., median

*Public Art is an essential component of a thriving community!*



<b>YEAR ACQUIRED</b> *Donation **Partial Donation	<b>TITLE</b>	<b>ARTIST NAME</b>	<b>LOCATION</b>
**2015	Middle Sea Downtown Alley Art	Betony Coons Greeley, CO	Near 9th and 8th St. plazas
**2015	Music Downtown Alley Art	Felisha Brower Greeley, CO	Near 9th and 8th St. plazas
**2015	Everything in the Universe Downtown Alley Art	Wes Sam Bruce Greeley, CO	Near 9th and 8th St. plazas
**2015	Bird Tree Uptown Tree	Alessandra Panieri Seattle, WA	Near 1303 8th Ave.
**2015	Geo Chromatic Positivity Generator Uptown Tree	Vincent Buwalda Montgomery, AL	Near 1331 8th Ave.
**2015	Sanctuary Tree Uptown Tree	Tom Ossner Pueblo, CO	Near 1514 8th Ave.
2015	The Sail	James Foster Fort Collins, CO	Family Funplex, 1501 65th Ave., front desk lobby
2014	Leaving the Mothership	Debbie Dalton and Michael McBride Greeley, CO	Bittersweet Park, 3500 16th St., W side near 38th Ave.
2014	Cloud Rain II	Jeffie Brewer Nacagdoches, AZ	Centennial Park, 2200 23rd Ave., NE side
**2014	Eagle and Soldier	Maxine Schwartz Greeley, CO	Bittersweet Park, 3500 16th St., SE corner at the Veterans Memorial
**2014	Art and Soul	Madeline Wiener Denver, CO	Union Colony Civic Center, 701 10th Ave., E side
2014	The Professor	Gregory Johnson Cumming, GA	Active Adult Center, 1010 6th St., front lobby
2014	Greeley Sweethearts	Amos Robinson San Diego, CA	Josephine Jones Park, 3500 26th St., SW corner

*Public Art is an essential component of a thriving community!*

<b>YEAR ACQUIRED</b> *Donation **Partial Donation	<b>TITLE</b>	<b>ARTIST NAME</b>	<b>LOCATION</b>
**2014	Greeley on my Mind Downtown Alley Art	Armando Silva Greeley, CO	Near 9th and 8th St. plazas
**2014	Urban Art Deco Downtown Alley Art	Zach Kiess Greeley, CO	Near 9th and 8th St. plazas
**2014	Shoebox Downtown Alley Art	Alex Carmona Greeley, CO	Near 9th and 8th St. plazas
**2014	Bird Watching Uptown Tree	Colette and Gary Pitcher Greeley, CO	Near 1335 8th Ave.
**2014	Cloud Tree Uptown Tree	Barbara Baer Denver, CO	Near 8th Ave. and 15th St., NW corner
**2014	Cairn Tree Uptown Tree	Charlotte and Ben Zink Berthoud, CO	Near 1517 8th Ave.
**2014	People Tree Uptown Tree	Evan Seigel Denver, CO	Near 10th St. and 8th Ave., NW corner
**2014	High Aspirations Uptown Tree	Robert Howard Fort Collins, CO	Near 8th Ave. and 16th St., NE corner
**2014	Palm Tree Uptown Tree	Robert Faulkner Evans, CO	Near 1412 8th Ave.
**2014	Unity Tree Uptown Tree	Roberto Roma Greeley, CO	Near 1415 8th Ave.
**2014	A Ute's Voice Uptown Tree	Reven Marie Swanson Denver, CO	Near 1407 8th Ave.
**2014	Saori in Bloom Uptown Tree	Dawn Feinberg Greeley, CO	Near 1530 8th Ave.
**2014	Awareness Uptown Tree	Pete Niehoff Greeley, CO	Near 1430 8th Ave.

*Public Art is an essential component of a thriving community!*

<b>YEAR ACQUIRED</b> *Donation **Partial Donation	<b>TITLE</b>	<b>ARTIST NAME</b>	<b>LOCATION</b>
**2014	Go West CV Fence III PHA	Lisa Cameron Russell Fort Collins, CO	Centennial Village, 1475 A St., E side along 14th Ave.
2014	Water in the Works	Julie Dillon Gill, CO	Manhole Covers in various locations throughout the city
*2013	Windswept II	Barry Ferich Las Vegas, NV	Union Colony Civic Center, 701 10th Ave., 2nd floor outdoor balcony
*2013	Desert Prince	Kurt Jungblut Golden, CO	809 7th St., NE side of County Bldg.
*2013	When Champions Meet	Chris Navarro Casper, WY	Island Grove Regional Park Arena, 14th Ave. near D St.
**2013	Green Snapdragon II	John King Lyons, CO	Lincoln Park, 800 10th Ave., East side
2013	Rain Symphony	Joshua Weiner Boulder, CO	Homestead Park, 3701 29th St., N side
*2013	Building Seas	Gregory Bergman Conrow, TX	Fire Station #2, 2227 23rd Ave.
**2013	Painter	Blake Nuebert Greeley, CO	809 9th St., W wall
**2013	Old Days	Blake Nuebert Greeley, CO	Furniture Gallery, 1028 8th Ave., S wall
2013	The Trout	Peter Hazel Reno, NV	Promontory Park, 1719 Promontory Park Way, N. side of the lake
*2013	Becoming Blue	Michael Mladjan Pine, CO	Peakview Park, 5601 13th St. Rd., N side
**2013	Go West CV Fence II Monfort	Lisa Cameron Russell Fort Collins, CO	Centennial Village, 1475 A St., SE corner

*Public Art is an essential component of a thriving community!*

<b>YEAR ACQUIRED</b> *Donation **Partial Donation	<b>TITLE</b>	<b>ARTIST NAME</b>	<b>LOCATION</b>
**2012	Farr Sighted	Seth Vandable Cedar Hill, TX	Farr Library, 1939 61st Ave., SE corner
*2012	The Magic Falcon	Joellen Domenico Lafayette, CO	8th Ave. and 8th St., NW corner
*2012	The Seed	Greg Reiche Santa Fe, NM	59th Ave. and 10th St., NW corner
**2012	Go West CV Fence I	Lisa Cameron Russell Fort Collins, CO	Centennial Village, 1475 A St., S side
**2012	Spilled Milk and Crackers	Amanda Ploegsma Denver, CO	810 9th St., E wall
2012	Greeley: A Visual Resonance	Frank Garza Greeley, CO	Greeley History Museum, 714 8th St., S wall
**2012	Phoenix	Armando Silva Greeley, CO	1020 9th Ave., E wall
**2012	The Old Station	Werner Schreiber Fort Collins, CO	CO Model Railroad Museum, 980 10th St., W wall
2012	Every Drop Counts	Ann Martinez, inspired by Rodarte kid designs Greeley, CO	Rodarte Community Center, 920 A St., Bus Wrap
**2012	Reflection Through Time - Fallen Officers Memorial figurative sundial	Debbie Dalton and Michael McBride Greeley, CO	Bittersweet Park, 3500 16th St., Weld County Fallen Officers Memorial
2012	Buffalo Grass	N/A	Homestead Park, 3701 29th St., S side
*2011	Oasis Bench	Louis DeAngelis Fort Collins, CO	Bittersweet Park, 3500 16th St., N side
2011	Dragonfly Giraffe	John King Lyons, CO	Sheepdraw Trail and 10th St., S side

*Public Art is an essential component of a thriving community!*

<b>YEAR ACQUIRED</b> *Donation **Partial Donation	<b>TITLE</b>	<b>ARTIST NAME</b>	<b>LOCATION</b>
2011	Butterfly Ball	Mary Ann Baker Mimbree, NM	Bittersweet Park, 3500 16th St., NE side near 13th St.
**2011	Hands in the Earth; Head in the Sky	Armando Silva and community members Greeley, CO	7th Ave. and 10th St., E wall
2010	Open Hearted; City Worker Memorial	Kathleen Caricof Loveland, CO	Lincoln Park, 800 10th Ave.
2010	Blue Grama	Kevin Shaffer Evergreen, CO	Reservoir Rd. and W 22nd St., NE corner
2010	Curly Sprokus	Michael Mladjan Pine, CO	Sanborn Park, 2031 28th Ave., W side
2010	Live in Color	Liz Blasi and UNC Friends Greeley, CO	905 16th St., E wall
**2010	Poudre Trail Story Posts	Debbie Dalton and Michael McBride Greeley, CO	Poudre Trail every 1/4 mile in City limits from 11th Ave. to 83rd Ave.
2009	Analemmatic Sundial	Tam Wahl Fort Collins, CO	Ramseier Farm Park, 2828 C St., E side
2009	Kids Sidewalk Art	Susan Haskins, with Elementary Students Greeley, CO	Ramseier Farm Park, 2828 C St., N side
2009	Blue Gigantus	Michael Mladjan Pine, CO	Centennial Village, 1475 A St., S side entrance
2009	Blue Heron Through the Ages	James G. Moore Fort Collins, CO	City Hall, 1000 10th St., N side entrance
2008	Sunrise	George Antuna Greeley, CO	Archibeque Park, 325 12th St., Splash Park S wall
2008	Aspens and Moon	Reven Marie Swanson Denver, CO	Boomerang Golf Course, 71st Ave. and 10th St., NW corner

*Public Art is an essential component of a thriving community!*



<b>YEAR ACQUIRED</b> *Donation **Partial Donation	<b>TITLE</b>	<b>ARTIST NAME</b>	<b>LOCATION</b>
*2008	Under Control	Greg Todd Greeley, CO	Fire Station #1, 11th Ave. and 12th St.
2007	Off to the Fire	Ken Williams Pueblo, CO	Fire Station #3, 1420 2nd St., W wall
2007	Ballfield Arch	Jim Emmett Greeley, CO	Island Grove Ballfields, 14th Ave. and A St., S side entrance
2007	Untitled	David Griggs Denver, CO	Greeley Police Station, 2875 W 10th St., front lobby
2007	Discovery Bay	Debbie Dalton and Michael McBride Greeley, CO	Discovery Bay Waterpark, 714 E 24th St.
2007	New Dancing Moon II	Reven Marie Swanson Denver, CO	Artwork removed for repair, location TBD
2006	Double Dancer	Dennis Sohocki Denver, CO	Union Colony Civic Center, 701 10th Ave., 1st floor lobby
2006	What my Community Means to Me	Vicki Ragan Atlanta, GA	Island Grove Event Center, 421 N 14th Ave.
2006	Hands that Built Weld County	Vicki Ragan Atlanta, GA	Island Grove Event Center, 421 N 14th Ave.
2006	Luminarias	Barbara Grygutis Tucson, AZ	Family FunPlex, 1501 65th Ave., W side
2005	Mountain Rose	Greg Todd Greeley, CO	Peak View Park, 5601 13th St. Rd., S side
2005	Community	Charlotte and Ben Zink Berthoud, CA	S 11th Ave. and 25th St., median
2005	Essence of Techi	White Elk Visions in Glass, Marty White Elk Holmes Glen Haven, CO	Ice Haus, 900 8th Ave., 1st floor lobby W wall

*Public Art is an essential component of a thriving community!*

<b>YEAR ACQUIRED</b> *Donation **Partial Donation	<b>TITLE</b>	<b>ARTIST NAME</b>	<b>LOCATION</b>
2005	Life on the Wild Slide	Greg Todd Greeley, CO	Ice Haus, 900 8th Ave.
2005	Gold Map of the Southern World	Gerry Newcomb Seattle, WA	Ice Haus, 900 8th Ave., balcony fascia
2005	Laying a Foundation	Mario Echevarria Longmont, CO	Greeley Museum, 714 8th St., front entrance
2005	Para la Gente	Lauren Camp Santa Fe, NM	Rodarte Community Center, 920 A St., indoor lobbies
2005	Welcome Bear	Sam And Debbie Van Dyken Bozeman, MT	Family Funplex, 1501 65th Ave., roundabout
2005	Winds of Change	Tom and Jean Latka Pueblo, CO	W 20th St. and 61st Ave., median,
2005	Taking Off	Colette and Gary Pitcher Greeley, CO	Poudre River Trail ½ mile W of 71st Ave.
2005	Written in Water	Alexandre Philippe Denver, CO	Public Art Office, 651 10th Ave.
2004	La Semilla	Emanuel Martinez Morrison, CO	Union Colony Civic Center, 701 10th Ave., S side patio
2004	Morning Mist	Greg Todd Greeley, CO	Greeley West Park, 2300 42nd Ave., W side
2003	11th Ave Bridge	Mario Echevarria, Steve Wood and Rodarte Center Fun Club; Longmont, CO	N 11th Ave. and Poudre River
2003	Hard Rock	Pati Stajcar Golden, CO	4th St. and 59th Ave.
2002	Peak View Panels	Pat Alles and John Dietz Greeley, CO	Peak View Park, 5601 13th St. Rd., NW side
2002	Homestead	Vicki Ragan Atlanta, GA	Island Grove Comm. Bldg., 525 N 14th Ave.

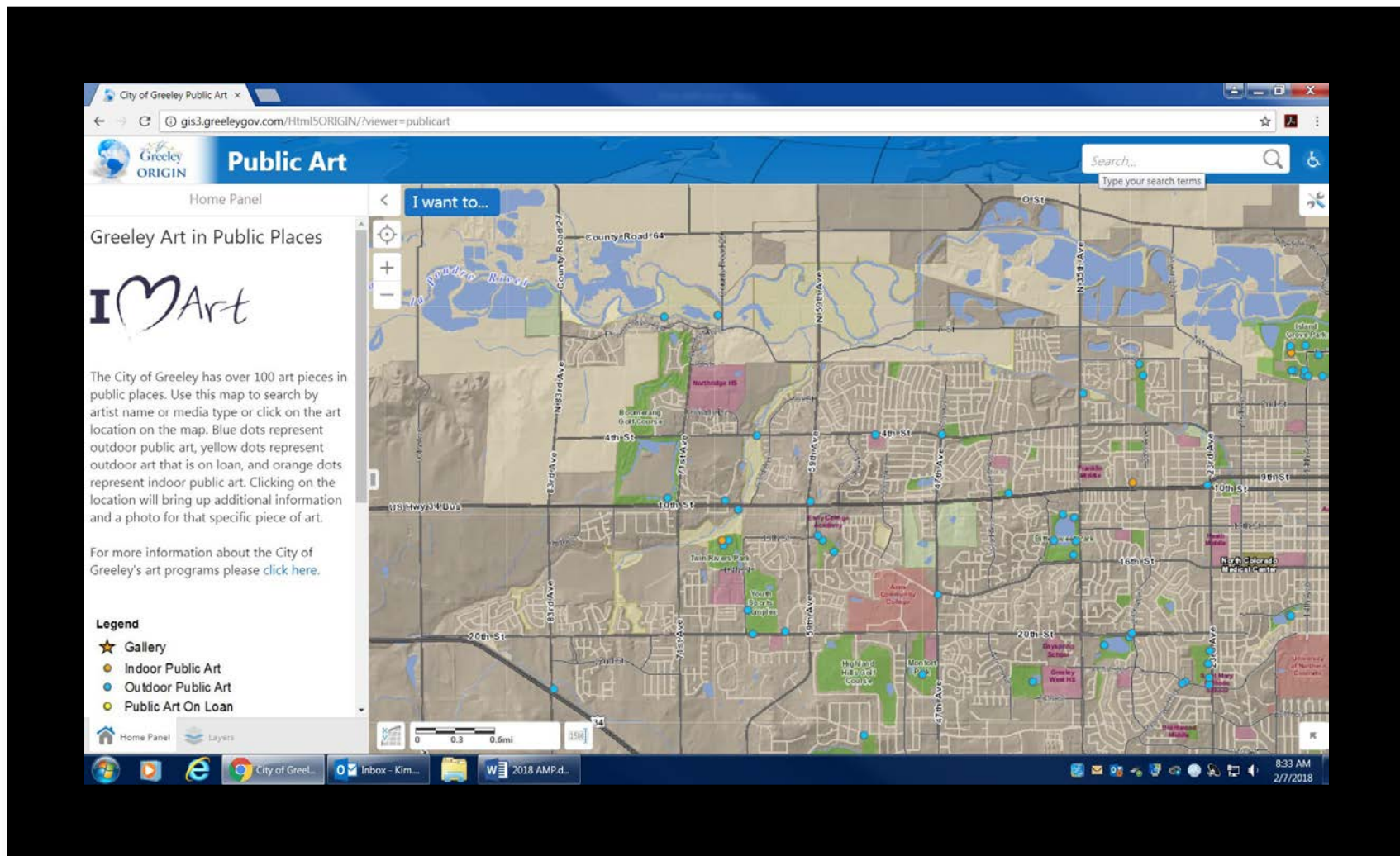
*Public Art is an essential component of a thriving community!*

<b>YEAR ACQUIRED</b> *Donation **Partial Donation	<b>TITLE</b>	<b>ARTIST NAME</b>	<b>LOCATION</b>
**2002	The Benefits are Endless	Eleanor Yates Greeley, CO	Recreation Center, 651 10th Ave., 1st floor lobby
2002	Firewatch	Jim Lynxwiler Fort Collins, CO	Fire Station No. 7, 6623 W 10th St.
2002	Flowers	Christopher Weed Colorado Springs, CO	Josephine Jones Park, 3500 26th St., SE side
2001	Bearly Serious	Dawn Weimer Loveland, CO	Pheasant Run Park, 4620 3rd St., NW corner
**2001	The Box	Eleanor Yates Greeley, CO	Recreation Center, 651 10 St., SW corner
2001	Reach For the Stars	Jim Lynxwiler Fort Collins, CO	Christa McAuliffe School, 51st Ave. and 4th St., N side
2001	Foxtail Grass	Larry Morin Parker, CO	Josephine Jones Park, 3500 26th St., E side
*2000	Pioneer Couple	Berndt Savig Greeley, CO	White Plumb Farm Learning Center, 955 39th Ave.
2000	Oasis	Tim Upham Fort Collins, CO	Reservoir Road 1/2 mile W of 23rd Ave.
2000	Wisdom Keepers	Jim Lynxwiler Fort Collins, CO	28th Ave. and 20th St., median
2000	Big 2 Do Memorial	Debbie Dalton and Michael McBride Greeley, CO	Linn Grove Cemetery, 1700 Cedar Ave.
*1999	Mysterious Gateway	Mary Michie	City Hall Annex, 1100 10th St., 1st floor hallway
1999	Wanna Play	Georgene McGonagle Denver, CO	Monfort Park, 2122 50th Ave., N side
1999	High Hopes	Georgene McGonagle Denver, CO	Youth Sports Complex, 5995 W 28th Ave.

*Public Art is an essential component of a thriving community!*

<b>YEAR ACQUIRED</b> *Donation **Partial Donation	<b>TITLE</b>	<b>ARTIST NAME</b>	<b>LOCATION</b>
1998	The Prize Catch	Kurt Jungblut Golden, CO	Glenmere Park, 14th Ave. and Glenmere Rd, S side
1998	Otterly Pointless	Pati Stajcar Golden, CO	City Hall Annex, 1100 10th St., E side entrance
**1996	More Than Words	Greg Todd Greeley, CO	Centennial Park Library, 2227 23rd Ave.
*1995	Little Hands of Peace	Jane DeDecker Loveland, CO	820 9th St., S side
*1993	The Promise of the Prairie	George Lundeen Loveland, CO	Lincoln Park, 800 10th Ave., W side
1988	Chandeliers	James Carpenter Greeley, CO	Union Colony Civic Center, 701 10th Ave., 2nd and 3rd floor lobbies
*1983	The Track of Time	Chuck Sturrock Greeley, CO	Active Adult Center, 1010 6th St., S side entrance
1981	Nathan Meeker	Amy Jamieson	Meeker Home, 1324 9th Ave., W side entrance
1976	Anti-Gravity Pyramids	Greg Button Greeley, CO	Sanborn Park, 2031 28th Ave., NE side
*1976	Century II	Carl and John Reichhardt Greeley, CO	Centennial Park, 2201 23rd Ave.

*Public Art is an essential component of a thriving community!*



**For a comprehensive list of current outdoor public art locations, artist names and photos, visit the art finder map at [Greeleyart.com](http://Greeleyart.com).**

*Public Art is an essential component of a thriving community!*