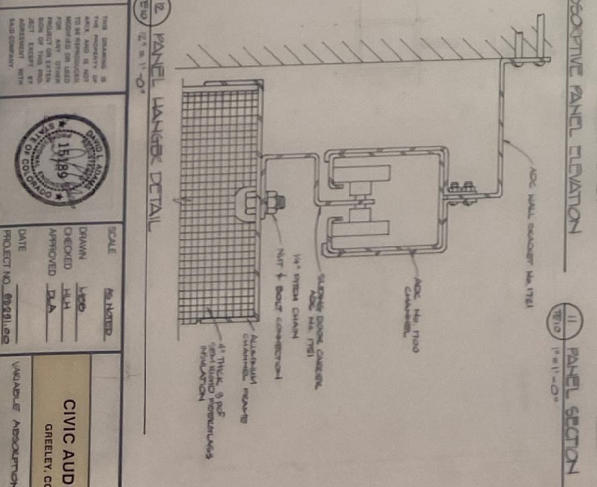
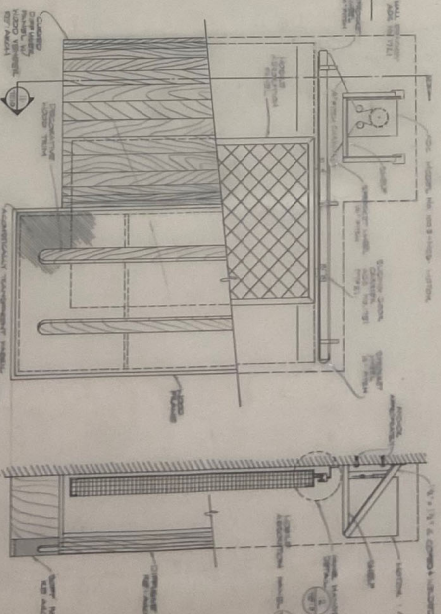
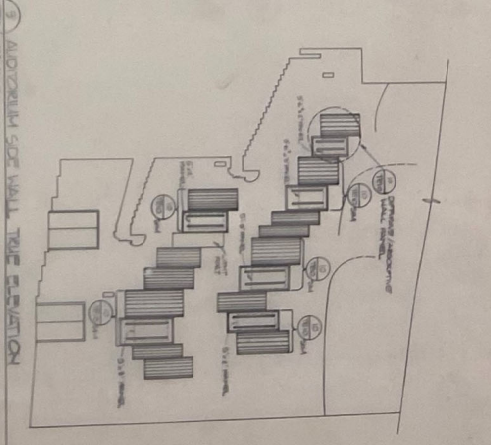


NOTES

- REMOVED FROM EXISTING CONDITION OF WORK. COLOR SHOULD BEAT EXISTING AND FINISHING CONTRACTOR WITH ALL NECESSARY DETAILS.
- REMOVED FROM EXISTING CONDITION OF WORK. COLOR SHOULD BEAT EXISTING AND FINISHING CONTRACTOR WITH ALL NECESSARY DETAILS.
- REMOVED FROM EXISTING CONDITION OF WORK. COLOR SHOULD BEAT EXISTING AND FINISHING CONTRACTOR WITH ALL NECESSARY DETAILS.
- REMOVED FROM EXISTING CONDITION OF WORK. COLOR SHOULD BEAT EXISTING AND FINISHING CONTRACTOR WITH ALL NECESSARY DETAILS.

\* SPECIFIC FINISHING TO BE DETERMINED BY CONTRACTOR TO BE IN ACCORDANCE WITH THE FINISHING CONTRACTOR'S SPECIFICATIONS.

SHOWN TYPE BOB 442 BOUND UNDER THE 4' PANEL.



A Professional Corporation

**ARIX**

Engineers, Architects, Planners  
 Surveyors, Architects  
 Interior Designers

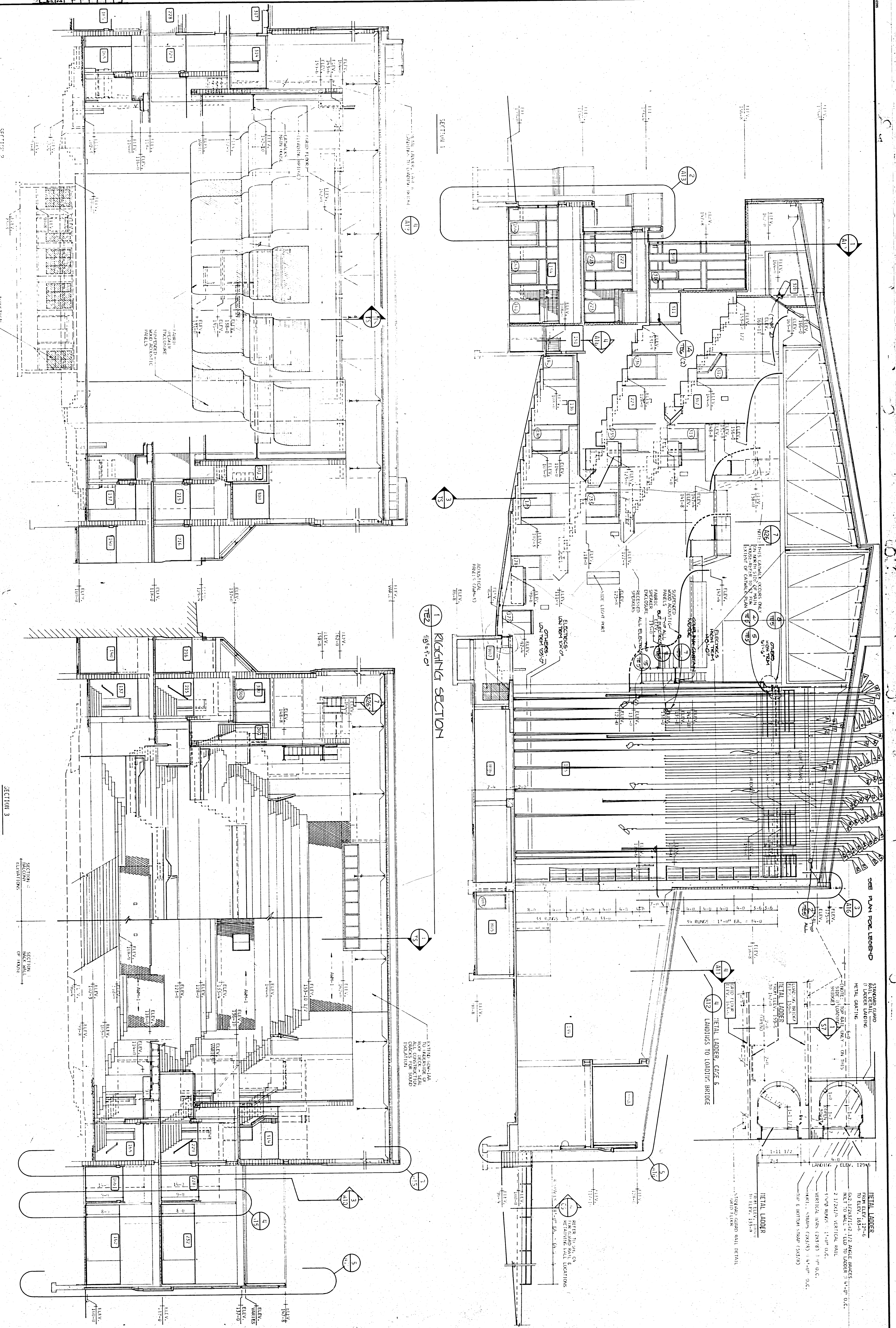
1989

SCALE: AS SHOWN

DATE: APPROVED: D.A.A.

PROJECT NO. 8745/85

CIVIC AUDITORIUM  
 GREENEY COLONADO  
 WASHINGTON, WASHINGTON



**METAL LADDER**  
 FROM ELEV. 129'-6"  
 TO ELEV. 153'-6"  
 2x4 PLANKS @ 12" O.C.  
 2x4 PLANKS @ 12" O.C.  
 2x4 PLANKS @ 12" O.C.  
 2x4 PLANKS @ 12" O.C.  
 4x4 POSTS @ 12" O.C.  
 4x4 POSTS @ 12" O.C.  
 4x4 POSTS @ 12" O.C.  
 4x4 POSTS @ 12" O.C.  
 4x4 POSTS @ 12" O.C.

SECTION 1

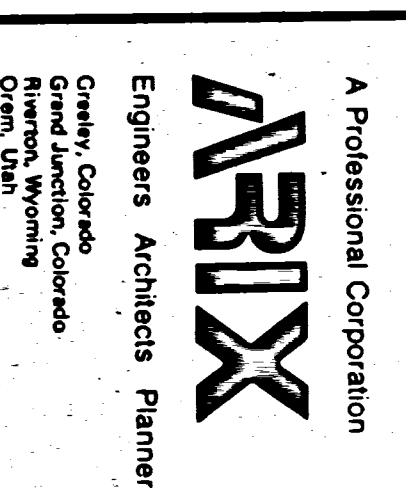
SECTION 2

SECTION 3

RIGGING SECTION

SECTION 2

SECTION 3



A Professional Corporation  
**ARIIX**  
 Engineers Architects Planners  
 2500 North 1st Avenue  
 Suite 200  
 Denver, Colorado 80218



SCALE: 1/4" = 1'-0"  
 DRAWN: M.S.M.  
 CHECKED: J.S.M.  
 APPROVED: R.S.S.  
 DATE: 11/15/00  
 PROJECT NO.: 83551-00

**CIVIC AUDITORIUM**  
 GREELEY, COLORADO  
 MAIN AUDITORIUM ELEVATOR CROSS SECTIONS  
 T&E OF 10